

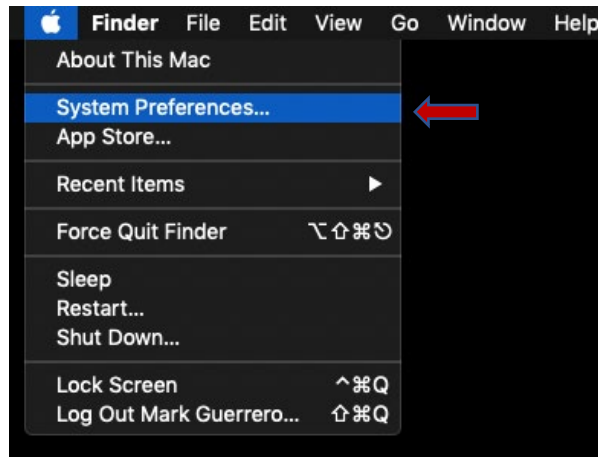
Host Name, IP and Hardware Address

This document demonstrates how to find the Host Name, IP, and Hardware address for MS Windows, Apple MAC, and Linux devices. We have also included a couple of non-OS devices that would only have a Media Access Control (MAC) Address (a.k.a. Physical address, or Hardware address).

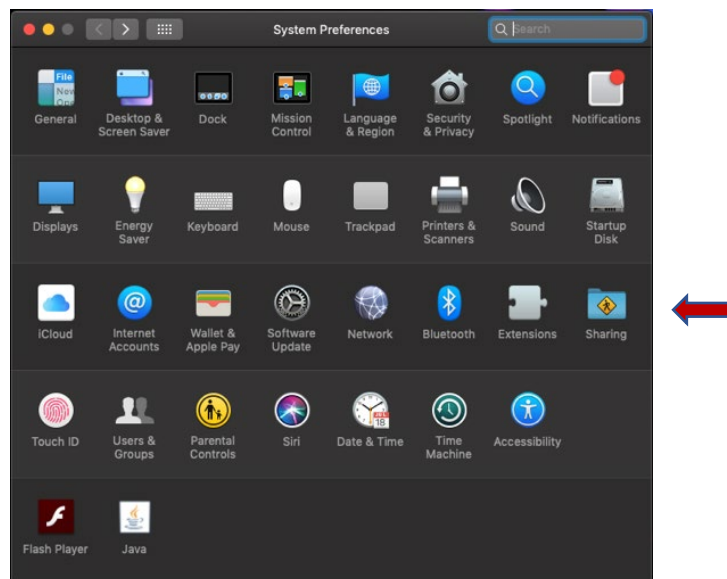
Apple Macbook:

1. Find Hostname

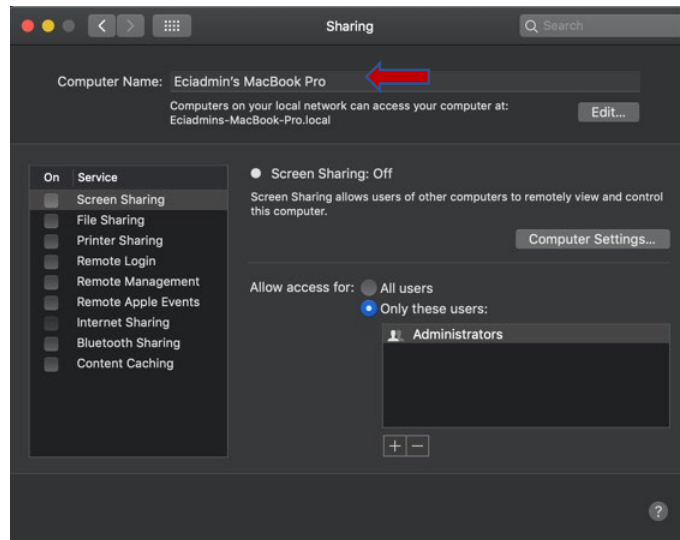
On your Mac, choose Apple menu  > System Preferences.



2. Then click "Sharing".

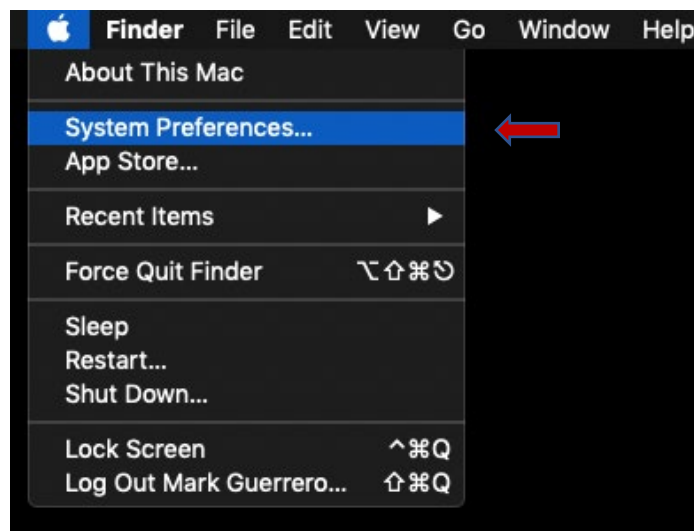


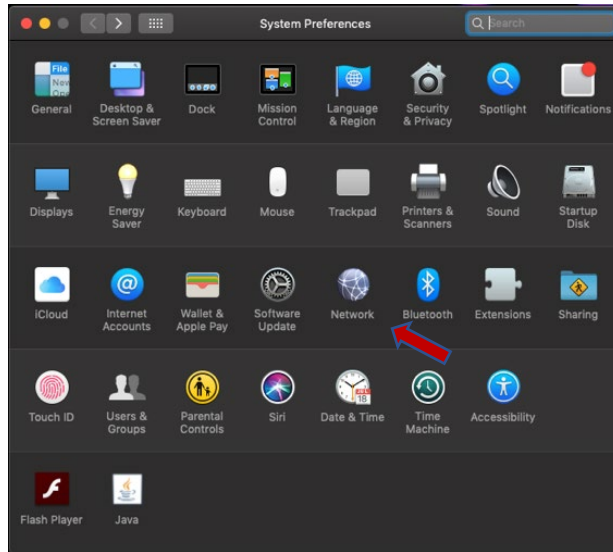
3. You will find your computer name in the dialog box.



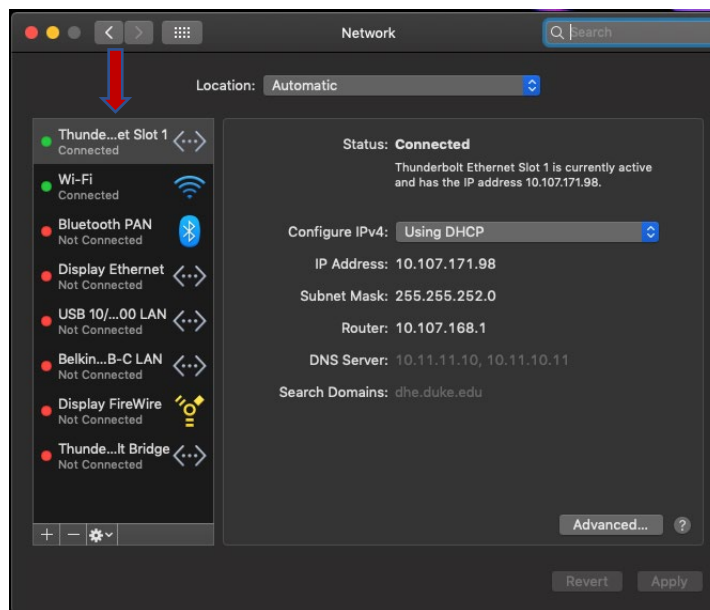
Find IP and MAC address

1. On your Mac, choose Apple menu  > System Preferences, then click Network.

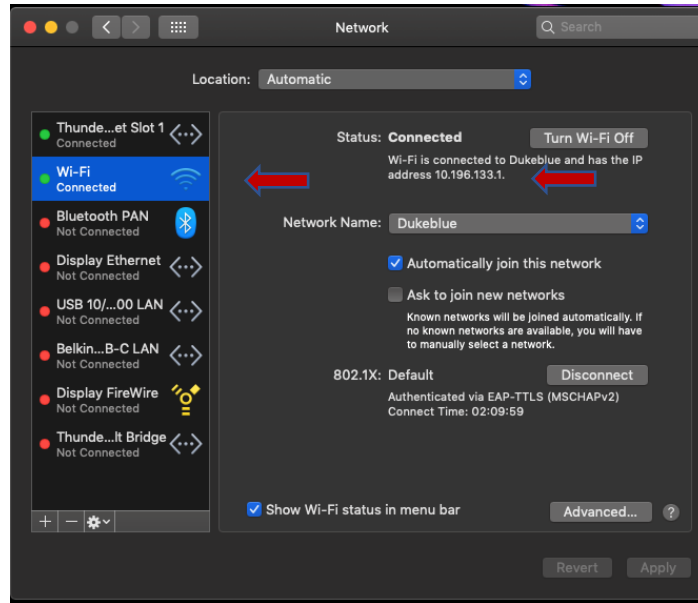


2. Then click “Network”.

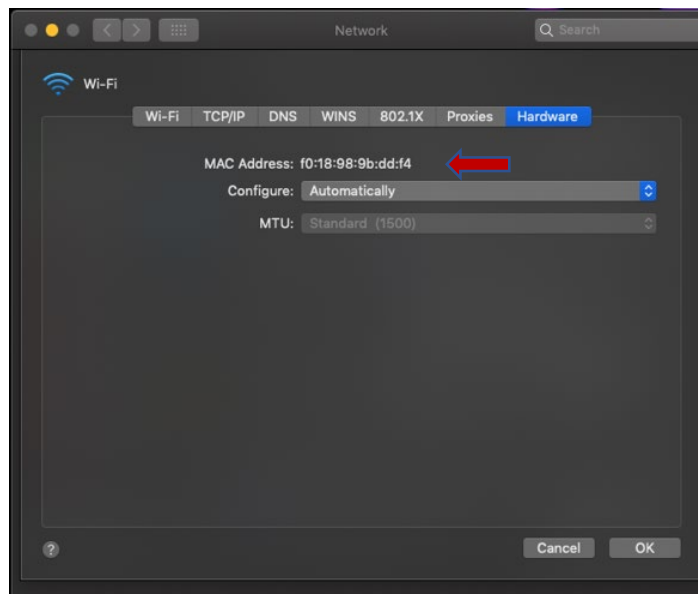
You will find your active interfaces on the left-hand side annotated with a Green dot.



3. Select the interface and the IP is displayed.



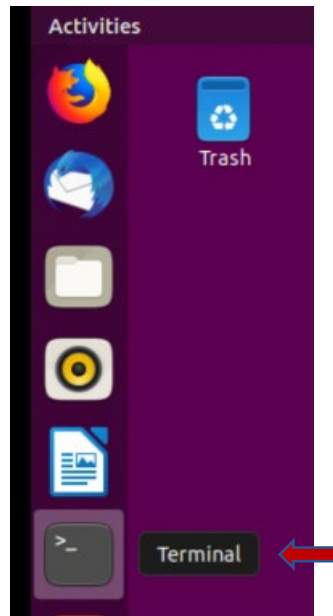
4. Choose Advanced > then click on Hardware. Your MAC Address is displayed for that interface.





Linux Terminal (Ubuntu):

1. Click on Terminal Icon.



2. Find Hostname: Type "*hostname*" and hit enter.

```
colin@colin-virtual-machine:~$ hostname
colin-virtual-machine
colin@colin-virtual-machine:~$
```

3. Find IP and MAC Address: "Type *Ifconfig -a*" and hit enter.

```
colin@colin-virtual-machine:~$ ifconfig -a
ens33: flags=4163<UP,BROADCAST,RUNNING,MULTICAST> mtu 1500
    inet 172.16.89.129 netmask 255.255.255.0 broadcast 172.16.89.255
    inet6 fe80::368c:186:de78:ba8 prefixlen 64 scopeid 0x20<link>
    ether 00:0c:29:79:0b:cd txqueuelen 1000 (Ethernet)
    RX packets 304141 bytes 440415483 (440.4 MB)
    RX errors 0 dropped 0 overruns 0 frame 0
    TX packets 37107 bytes 2544989 (2.5 MB)
    TX errors 0 dropped 0 overruns 0 carrier 0 collisions 0

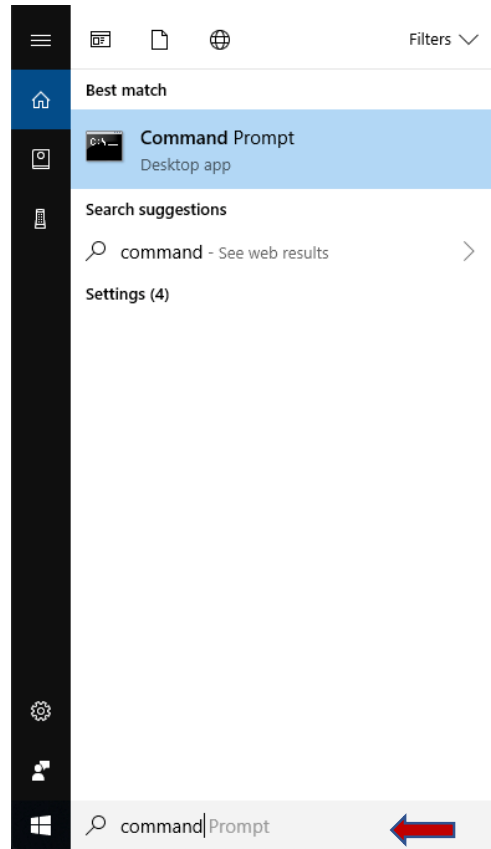
lo: flags=73<UP,LOOPBACK,RUNNING> mtu 65536
    inet 127.0.0.1 netmask 255.0.0.0
    inet6 ::1 prefixlen 128 scopeid 0x10<host>
    loop txqueuelen 1000 (Local Loopback)
    RX packets 1020 bytes 72093 (72.0 KB)
    RX errors 0 dropped 0 overruns 0 frame 0
    TX packets 1020 bytes 72093 (72.0 KB)
    TX errors 0 dropped 0 overruns 0 carrier 0 collisions 0

colin@colin-virtual-machine:~$
```

Windows:

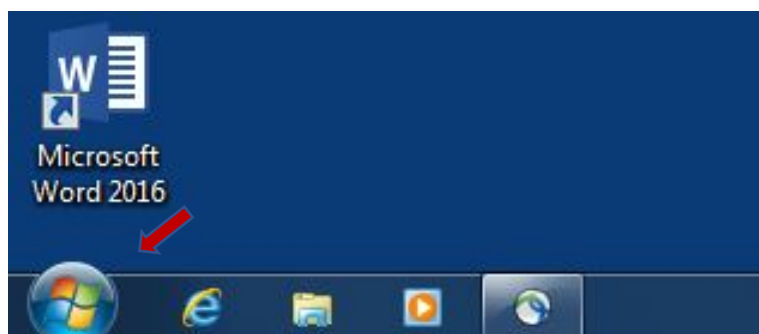
Windows 10

1. In the search bar (lower left corner), type “*command*” and hit enter.



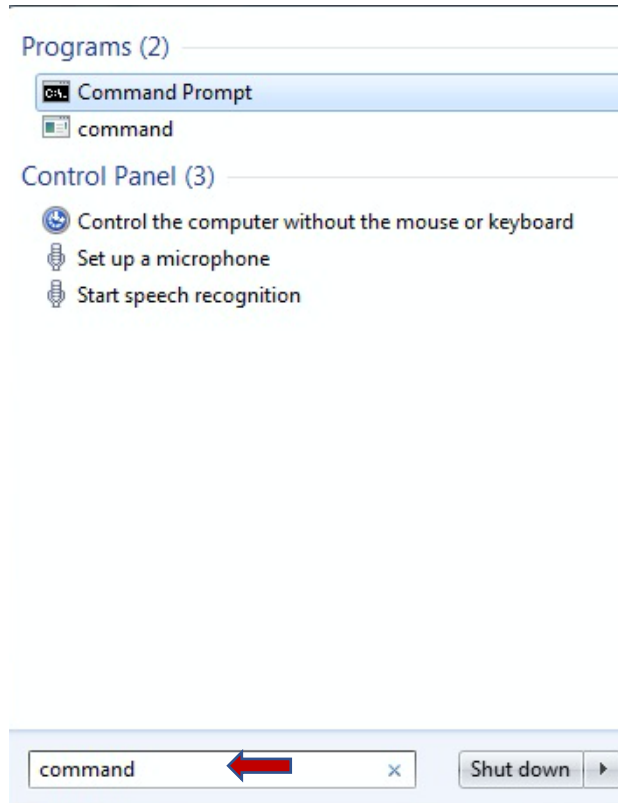
Windows 7

1. Click on the Start button

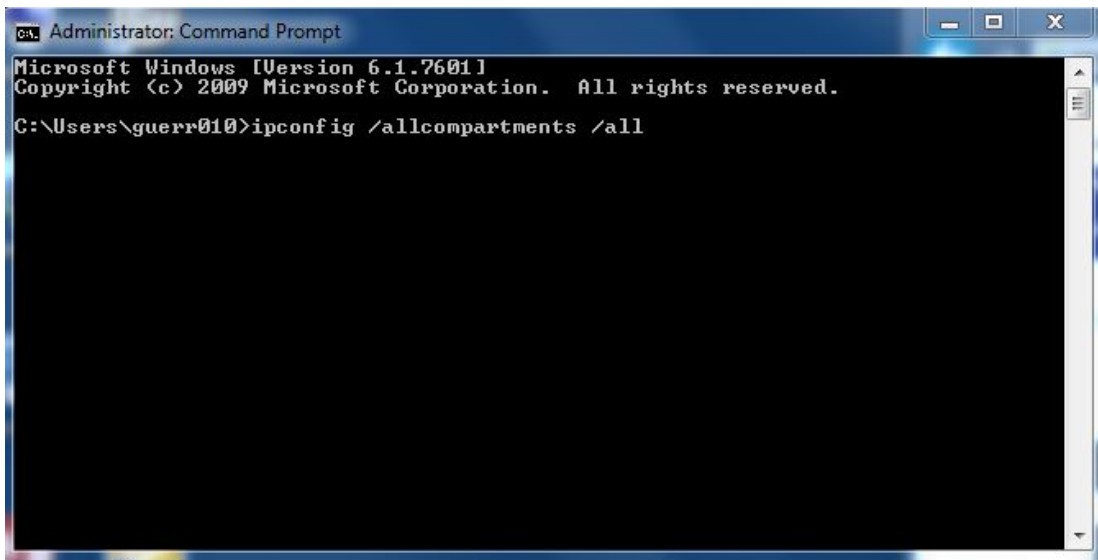




2. When dialog box pops up, type *“command”*



3. When the command prompt pops up, type *“ipconfig /allcompartments /all”*, and hit enter.



- You will find your **Host Name**, **IP**, and **Media Access Control (MAC) Address** (a.k.a. Physical address, or Hardware address) for your **active interfaces**.

Note: Active interfaces will have an IP address

```
Administrator: Command Prompt
Microsoft Windows [Version 6.1.7601]
Copyright (c) 2009 Microsoft Corporation. All rights reserved.

C:\Users\guerr010>ipconfig /allcompartments /all

Windows IP Configuration

=====
Network Information for Compartment 1 (ACTIVE)
=====
Host Name . . . . . : FS-HP1TEST9WATL
Primary Dns Suffix . . . . . : dhe.duke.edu
Node Type . . . . . : Hybrid
IP Routing Enabled . . . . . : No
WINS Proxy Enabled . . . . . : No
DNS Suffix Search List . . . . . : dhe.duke.edu
                                     duhs.duke.edu

Wireless LAN adapter Wireless Network Connection:
Connection-specific DNS Suffix . . : dhe.duke.edu
Description . . . . . : Intel(R) Dual Band Wireless-AC 7260
Physical Address. . . . . : 5C-51-4F-78-72-74
DHCP Enabled. . . . . : Yes
Autoconfiguration Enabled . . . . : Yes
IPv4 Address. . . . . : 10.87.113.145(Preferred)
Subnet Mask . . . . . : 255.255.0.0
Lease Obtained. . . . . : Monday, July 15, 2019 8:36:11 AM
Lease Expires . . . . . : Monday, July 15, 2019 12:21:51 PM
Default Gateway . . . . . : 10.87.0.1
DHCP Server . . . . . : 10.11.11.13
DNS Servers . . . . . : 10.11.11.10
                                     10.11.10.11
NetBIOS over Tcpip. . . . . : Enabled

Ethernet adapter Local Area Connection:
Connection-specific DNS Suffix . . : dhe.duke.edu
Description . . . . . : Intel(R) Ethernet Connection I218-LM
Physical Address. . . . . : 28-D2-44-43-1D-D5
DHCP Enabled. . . . . : Yes
Autoconfiguration Enabled . . . . : Yes
IPv4 Address. . . . . : 10.152.80.26(Preferred)
Subnet Mask . . . . . : 255.255.255.128
Lease Obtained. . . . . : Monday, July 15, 2019 8:36:01 AM
Lease Expires . . . . . : Monday, July 15, 2019 12:36:01 PM
Default Gateway . . . . . : 10.152.80.1
DHCP Server . . . . . : 10.18.32.16
DNS Servers . . . . . : 10.18.32.15
NetBIOS over Tcpip. . . . . : Enabled

C:\Users\guerr010>
```




Example of other devices:

Below are examples showing the **Media Access Control (MAC) Address** (a.k.a. Physical address, or Hardware address) of the device.

Humidity device



IP Camera

